

# Installation of Shadows

Shadows can be installed on Windows 11, Windows 10, Windows 8.x and Windows 7, in 64-bit.

- At the end of the download, launch the installation by double-clicking on the file **shadows.exe**.

During the installation, English and French user manuals are installed. If you wish to have the user manual in another language, download it from the site, or in **Shadows**, select another language in the preferences and then go to the **Help** menu and select **Download the user manual locally**.

## Installation of the Shadows Pro license

The three levels of Shadows are materialized by the same executable but the level difference is given by the encrypted license file **shadows.license.txt** stored in the **Documents\Shadows Data** folder. The license must be associated with the PC on which Shadows is installed.

The following association procedure requires an active Internet connection.

- 1 – Copy the license file that you received by E-mail into the **Documents\Shadows Data** folder.
- 2 – Launch Shadows. A dialog box will ask you to associate the license. Follow the instructions.
- 3 – Shadows Pro is now installed and configured.

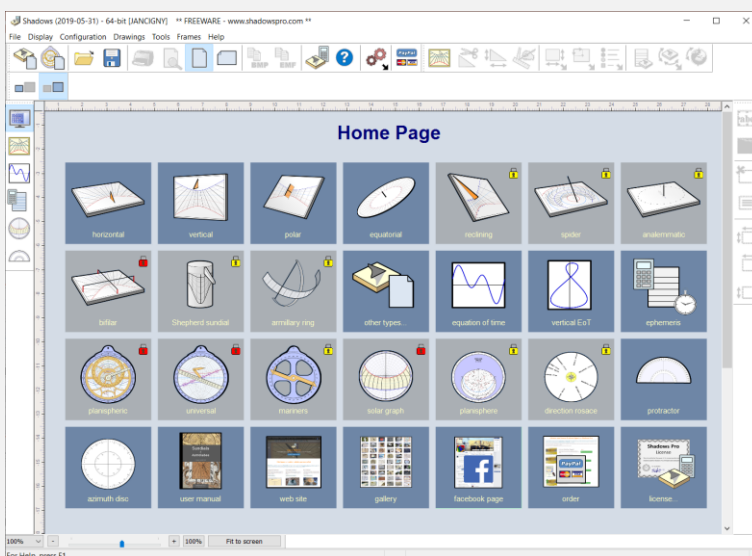
In case of communication error during the association, try to authorize Shadows in the Windows Firewall or in your antivirus program by adding an exception on the file **shadows.exe**.

Have a look to the page [www.shadowspro.com/help](http://www.shadowspro.com/help) for more assistance.

If you do not have an Internet access on your PC, or if you have a communication error during the association, locate a text file in the **Shadows Data\Association** folder and send it to [info@shadowspro.com](mailto:info@shadowspro.com). This file is created during the association attempt. The associated license will be sent back to you.

## First steps with Shadows

When you start Shadows, you see the Home Page with icons that allow you to easily access to the most frequent features of Shadows.



Buttons with yellow lockers correspond to features enabled in Shadows Expert, those with red lockers are enabled in Shadows Pro.

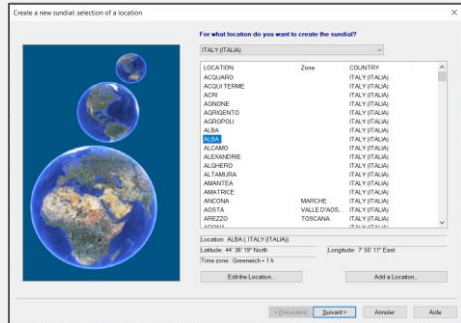
If you have a Shadows Expert license, you will only see red lockers.

If you have a Shadows Pro license, you will have access to everything.

# Create your first sundial

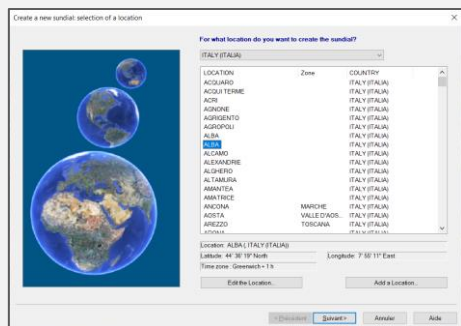
The easiest way is to click on an icon from the Home Page and to select the location in the dialog box that is displayed, then validate with OK. The sundial layout is displayed on screen.

You can also create a sundial from the File menu and Create a sundial... It will give you access to more options through three dialog boxes.



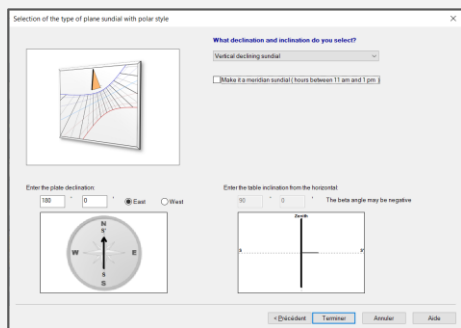
In the first dialog box, select the location of the sundial. Select the country and then select a city in the list below. You may add a new location to the list.

Most of the time, you can select a city that is near your exact location, a few kilometers away, in case your exact location is not in the list.



Then select the type of sundial you want to create:

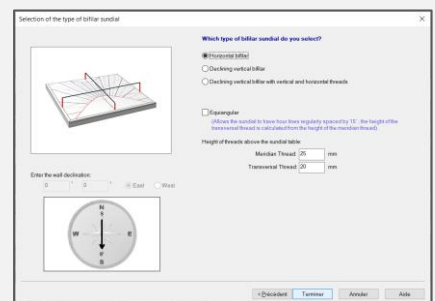
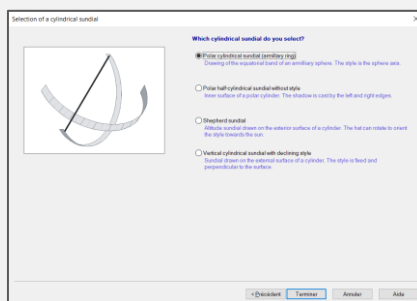
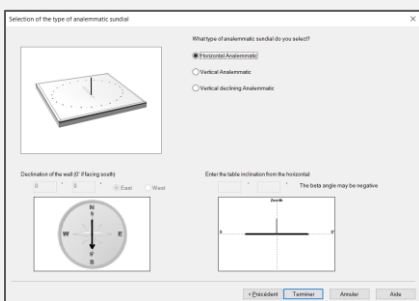
- Sundial with polar style  
*(the most common type of sundials)*
- Analemmatic sundial  
*(with a large ellipse and a mobile style)*
- Cylindrical sundial  
*(such as a shepherd's dial or a armillary sphere)*
- Bifilar sundial  
*(with two perpendicular threads replacing the style)*



For a sundial with polar style, select the sub-type in the following screen, in the popup list.

In case of a declining (or reclining) sundial, you can enter the angles below the drawings.

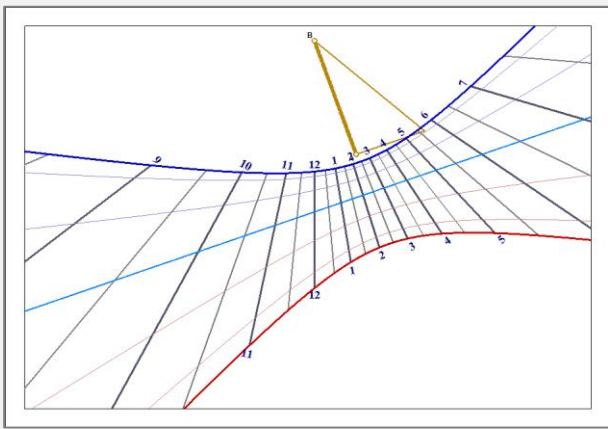
Each sundial may be turned to a meridian sundial, giving time only between 11h and 13h.



For an analemmatic sundial, select the sub-type. Enter the angles in case of a declining vertical sundial.

For a cylindrical sundial, select the sub-type and validate.

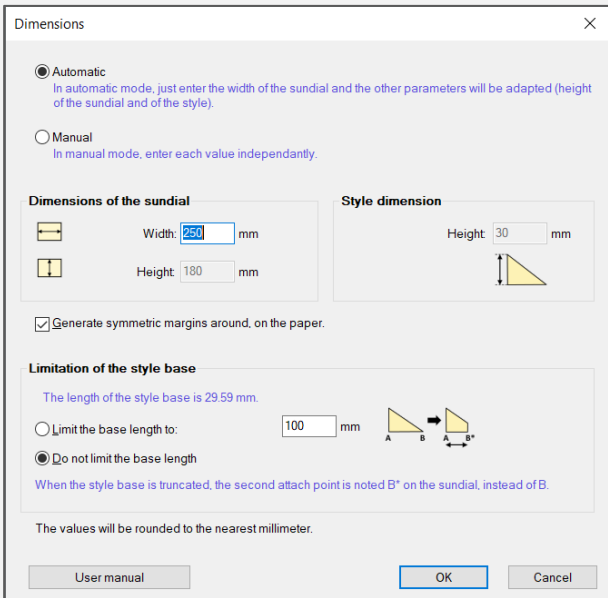
For a bifilar sundial, select the sub-type and enter the height of each thread.

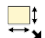


The sundial is then displayed on screen. The position of the style is marked with point A (for the perpendicular style, the gnomon) and point B (the polar style). These two styles form the sides of the triangular style, that can be drawn on the layout, as if it was folded on the sundial.

The default drawing options can be changed from the **Drawings** menu.

Some options can be changed from the toolbar icons, such as half-hours, quarters, declination arcs, or colors of lines.



One of the first operations is to set the dimension of the sundial plate and the height of the style. Go to the **Configuration** menu and select **Dimensions...**, or click on the icon: 

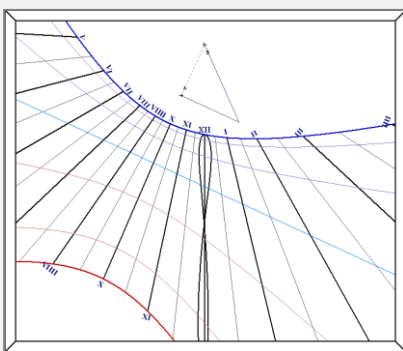
An automatic mode will calculate the dimensions from its width.

You may also configure each individual dimension by selecting the manual mode.

The size of the sundial plate does not change the scale of the layout, but only its extension.

The height of the style will modify the scale of the layout. Coordinates of points on the sundial are proportional to the height of the style.

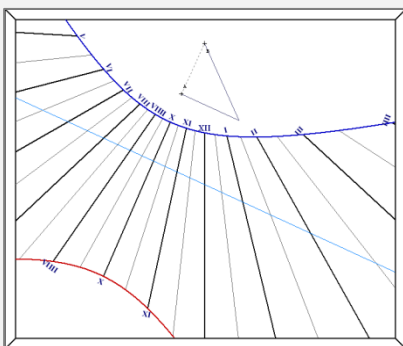
## Drawing options



### Display the analemma curve at noon

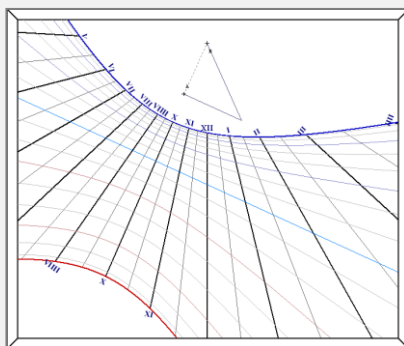
In the **Drawings** menu, select **Analemma options...** Then select **Analemma at noon**.

On a large sundial, it may be interesting to mark the curve with points for every day or for the first day of each month (see the corresponding check boxes)

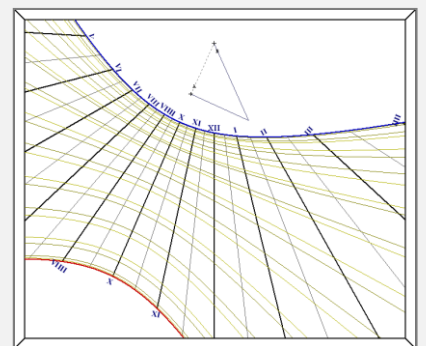


solstices et equinoxes

### Options for declination arcs



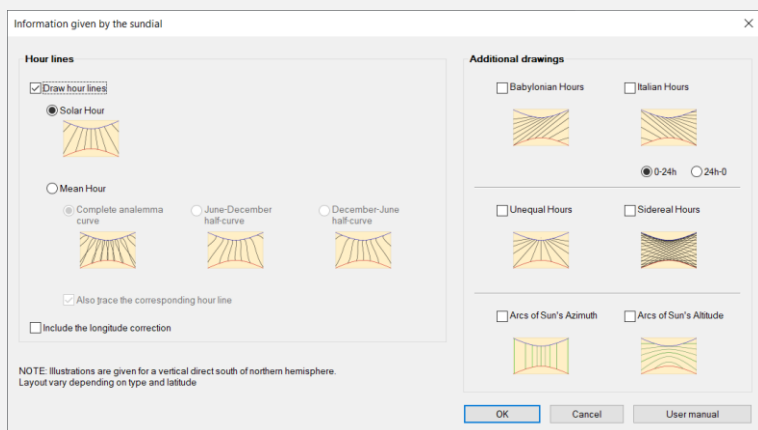
arcs of decants



arcs of dates (every 15 days)

## Sundial of solar time or of mean time

Solar time is given directly by the *Hour angle* of Sun. A sundial can be configured to give Local solar time (of your location) or Solar time of the reference meridian of your Time zone (longitude correction will be included in the drawing of hour lines). Go to the **Configuration** menu and select **Information given by the sundial...**



Select **Mean hour** and select which half curve you want to draw (in order to keep the drawing simple). Complete curves will draw the 8-shape on each hour line, so the sundial may be more difficult to read.


You may uncheck the option **Also draw the corresponding hour line**.

## Draw antique hours and other information

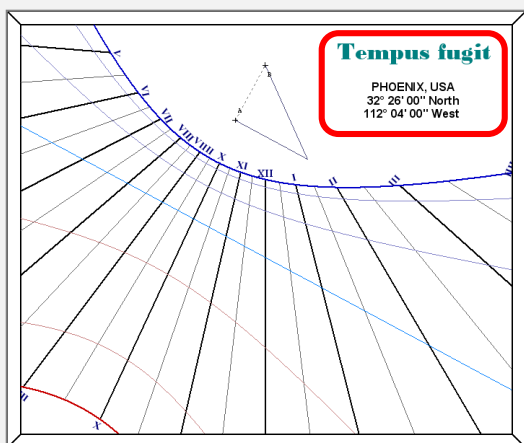
Some ancient sundials, especially in Europe (France, Italy, Germany), sport **italic hours** or **Babylonian hours**. They count hours from the previous sunset (italic) or from sunrise (babylonian). You can select them in the above dialog box. They can be selected simultaneously but it is clearer to have only one kind per sundial. Some options are not available in all levels of Shadows.

# Decorate the sundial

## Add a motto

From the toolbar on the right side of the screen, click on the **Text frame** icon.  A dialog box appears.

In the dialog box, click on **Insert a motto**. Another dialog box offers a list of mottoes in various languages and dialects. Select a language, then a motto and validate with OK.



You can configure the text style and color with the button **Text style**. Validate with OK. The text is displayed in a frame that can be moved and resized. To change its content, double-click on it. You can also display the location name and position.

## Add an image or clipart

Add a decoration with a bitmap image, a photo or a vector drawing (clipart). Click on the **Image frame** icon. Select a file from your hard drive. You can insert files of the following formats: BMP, JPG, GIF, WMF or EMF.



Find other features and advices in the user manual (F1 or Help menu)